



CAR BENCH[®]
CAR BENCH INTERNATIONAL SPA

ONLY THE BEST CAN BE NUMBER ONE

STEEL KIT





Trolley

OPTIONAL



Pulling bar with revolving Mt. 0.90

The steel-kit is the ideal partner for the repair of all the small damages which happen daily and which need to be repaired in any body-shop. It is a reliable, fast and easy system that reduces the repair times to the minimum, considering that the preparation of the panels are reduced to the minimum.

The paint is very marginally removed. "Using the repair glue kit the paint is not removed at all"! The highest flexibility of the mobile foot of the bar makes the reparation possible in any area of the car and thanks to

the suction cups it can be used also on the vertical panels.

Due to its robustness it is also possible to do middle-big repairs. And always just by 1 worker. Last thing to notice is that the kit is equipped with a specific spot generator for steel which guarantees the highest performances also in the most difficult surfaces.

Repairing has never been so easy!



Pulling bar kit M 0.90 with mobile feet



Pull system for steel



7 aluminum hammers kit

MULTI-PURPOSE SINGLE PHASE SPOTTER FOR BODY SHOP

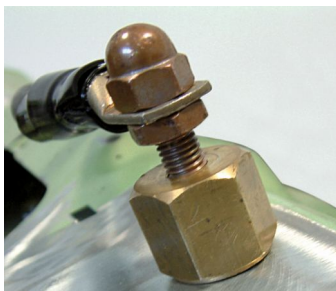
- Multifunction generator with electronic regulation, synchronous control and digital panel, single-phase power supply 400V 50 / 60Hz
- Ideal for bodywork repairs on conventional sheet metal, with the exception of aluminum
- Spot 2500 allows you to:
 - Work in manual / automatic mode
 - To perform spot welding of heavy duty washers, inserts, sheet metal pressing, sheet metal heating, pulse heating
 - The USER function allows to customize adjustments
 - A BUTTON is inserted in the spot gun which allows quick remote selection of the functions present on the generator panel.
- available in version for single-phase power supply 230V 50/60 Hz



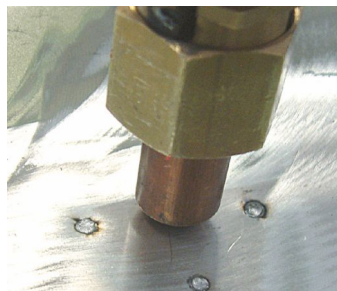
Time-saving on automotive repairing



Approved by several worldwide car manufacturers



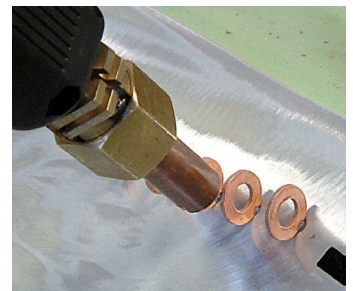
Quick ground



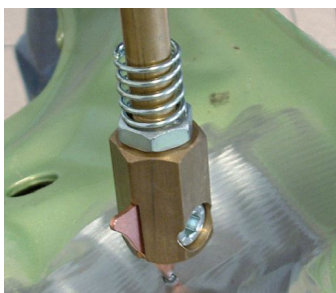
Pimple heat and push electrode



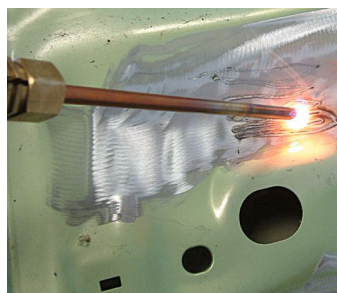
Corrugated wire spot welding



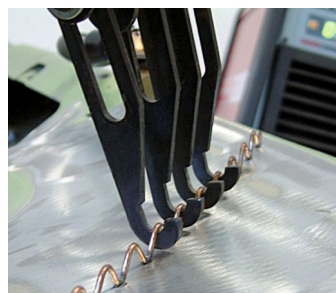
Spotting on an heavy duty washer



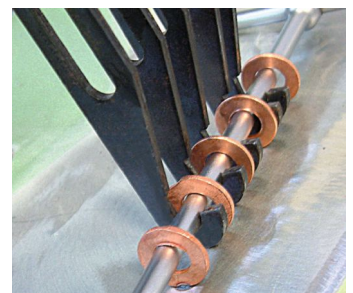
Spotting of special washers



Carbon arc electrode for heat shrinking



Pulling Operations



Pulling Operations

STEEL KIT



"SPOTTER" - TECHNICAL FEATURES

Single phase input	on request: 230V 50/60 Hz $\pm 10\%$	400 V 50 Hz $\pm 10\%$
Fuse rating (slow blow)		10 A
Max. installed power+		6,0 kW
Current range		3000 A max.
Protection class		IP23S
Weight		30 Kg
Dimensions		207 x 437 x 411h mm



A **BUTTON** is inserted in the spot gun which allows quick remote selection of the functions present on the generator panel.

CAR BENCH
TRAINING ACADEMY

REPAIR
METHODS

CAR BENCH
EQUIPMENT TRAINING

CUSTOMIZED
OEM TRAININGS



Car Bench International S.p.A.
Via Dorsale, 22 - 54100 Massa (MS) - ITALY
info@carbench.it - ph. +39 0585 251261
www.carbenchinternational.com